

The IBM Transpad

Lim Chin Teck, Li Linlin, Wang Yapeng

Effect Overview

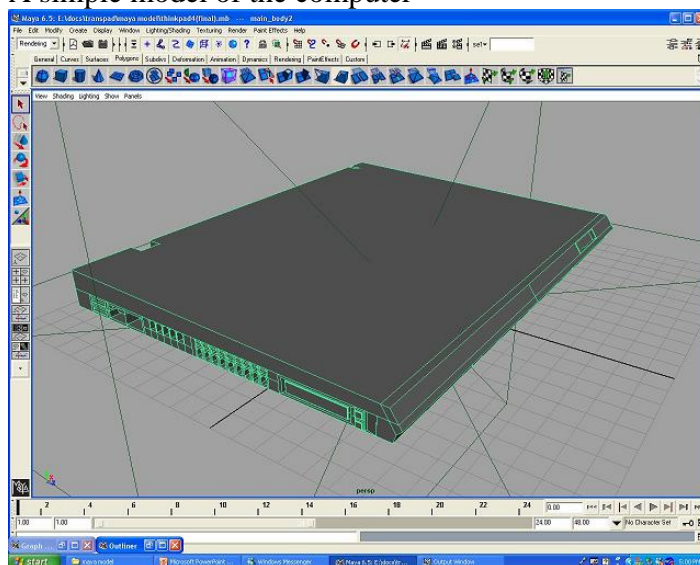
We try to demonstrate a story in which a robot transferred from a notebook fight with a real person.

What we have done

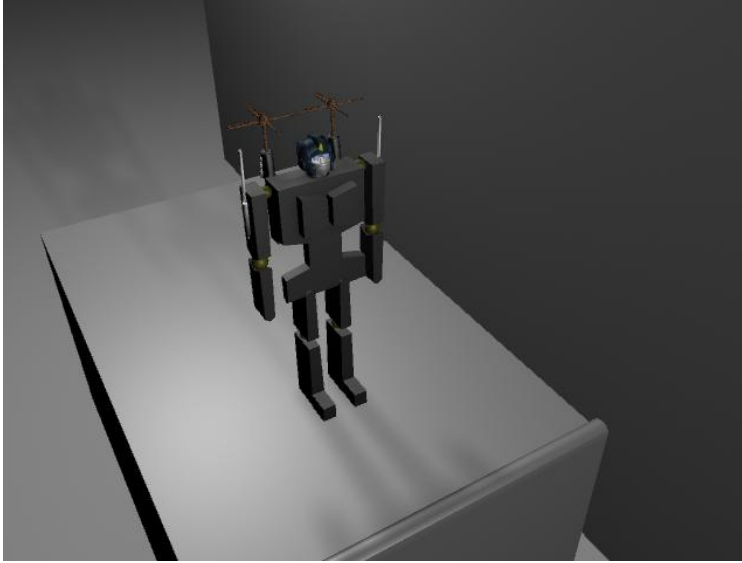
1. Shooting of video sequences



2. Modeling the computer and the robot
A simple model of the computer



A model of the robot with light and shadow



3. Key out person image from the raw video with blue screen

Problem encountered

1. Keying process is not that good as we thought. Because we used a soft blue cloth as the blue screen in some of our first shoot, we found that the shadow in the blue screen is difficult to clear. Besides, we used blue screen even in scenes which was not necessary. We hope to solve these problems by re-capture some scenes.
2. Previous model downloaded from network could not be modified in maya, so eventually we need to model the laptop by ourselves.
3. To perform the transformation more convincing to audience, we need to cut the laptop into many different parts to be transformed to hands or legs. It takes a long time to design how the laptop to be cut
4. We make the final result robot to be similar to Optimus Prime from the Transformer, the animation. So the audience could adopt the idea very fast with least illustration

What we need to do next

1. Re-capture some video sequences which is difficult to key out the person's image
2. Complete the 3D animation based on the model
3. Compose sequences of different layer together
4. Edit the sequences into a whole video, including adding audio effect and creating the head and the tail.