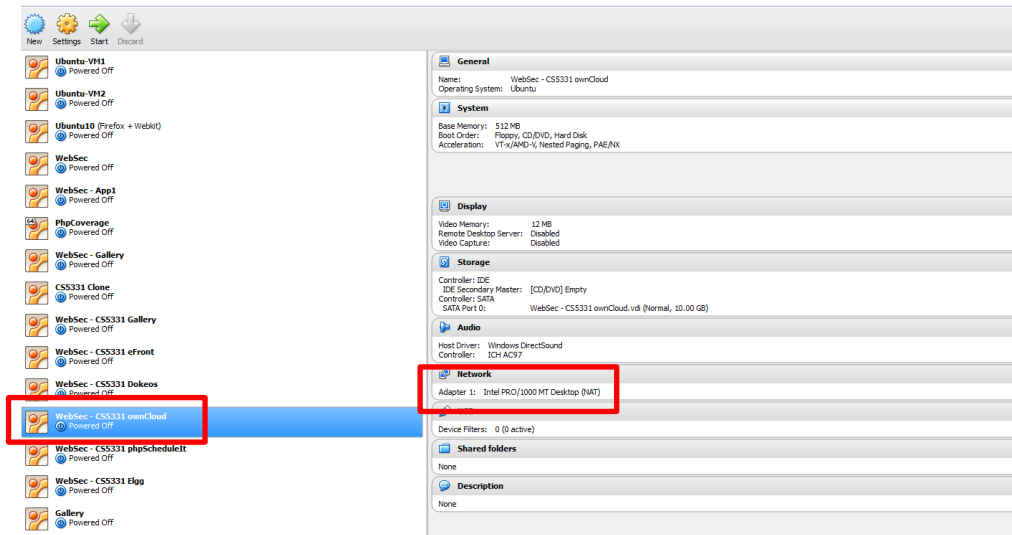
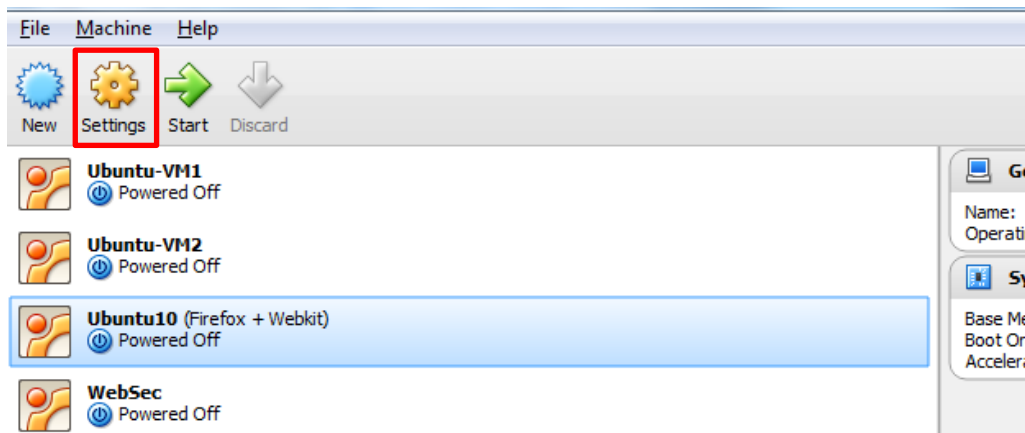


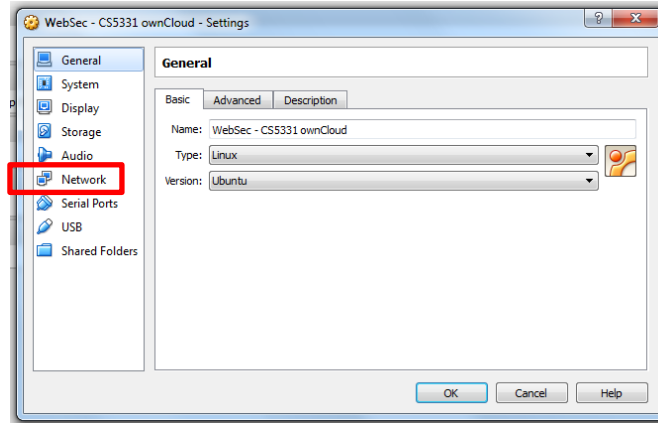
## Accessing VM's web server from Host machine

1. Check the network adapter of the VM by clicking on the VM's name under the "Network" tab. Most likely you will be having only one network adapter, the NAT (network address translation)

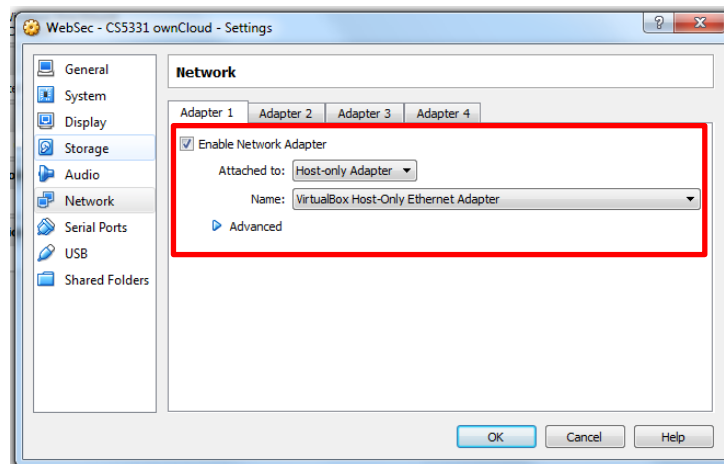


2. Go to "Settings" and click "Network" tab

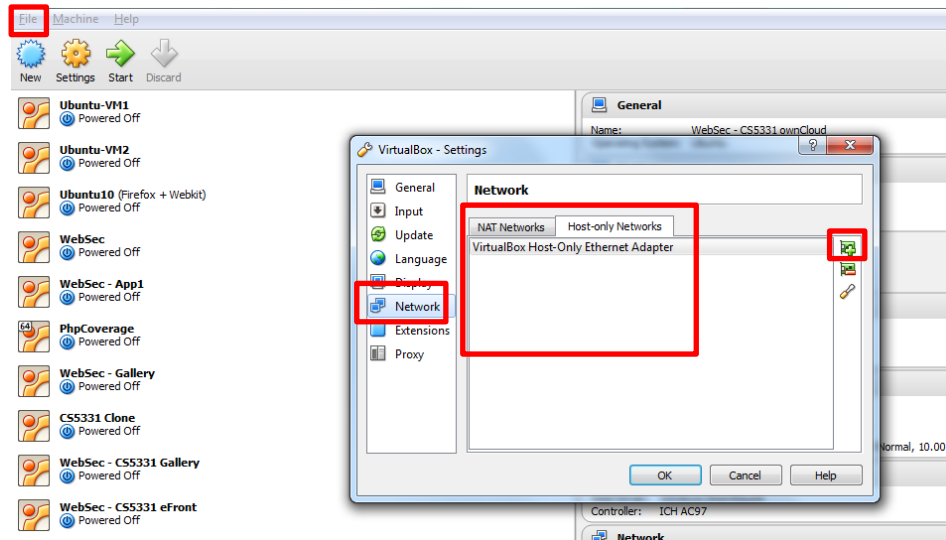




3. Go to "Adapter 1" tab, check 'Enable Network Adapter', and choose 'Host-only adapter' under 'Attached to' dropdown list. Under 'Name' dropdown list, choose everything that you have there. Click OK.

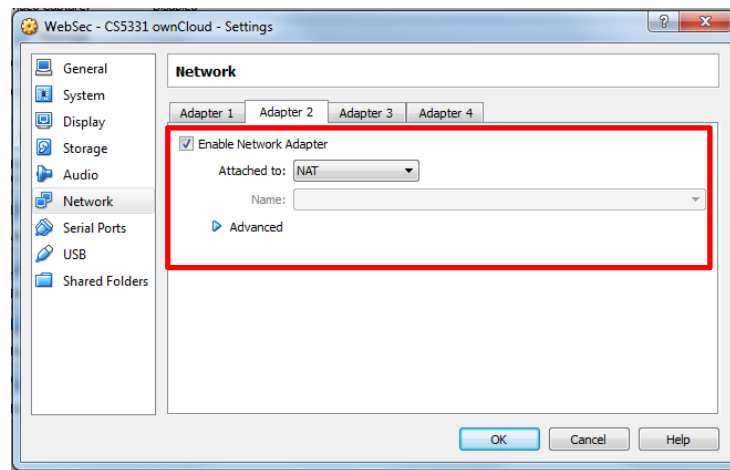


4. If nothing is there under "Name" drop down list, try to create new Ethernet adapter. Go to File → Preferences. Under "Network" option, go to 'Host-only Networks' tab. Click on the green icon.



Now, something should appear under the “Name” dropdown list.

5. Go to “Adapter 2” tab, check ‘Enable Network Adapter’, and choose ‘NAT’ under ‘Attached to’ dropdown list. Click OK.



6. Now try running the VM. After it boots up, open terminal and run `ifconfig`. Get the IP address from the ‘eth0’ interface. In my case, it is ‘192.168.56.102’

```
student@student-laptop: ~
File Edit View Terminal Help
student@student-laptop:~$ ifconfig
eth0      Link encap:Ethernet  HWaddr 08:00:27:73:b2:d5
          inet addr:192.168.56.102 Bcast:192.168.56.255 Mask:255.255.255.0
          inet6 addr: fe80::a00:27ff:fe73:b2d5/64 Scope:Link
          UP BROADCAST RUNNING MULTICAST  MTU:1500  Metric:1
          RX packets:5 errors:0 dropped:0 overruns:0 frame:0
          TX packets:26 errors:0 dropped:0 overruns:0 carrier:0
          collisions:0 txqueuelen:1000
          RX bytes:2100 (2.1 KB)  TX bytes:4585 (4.5 KB)

eth1      Link encap:Ethernet  HWaddr 08:00:27:5c:4f:da
          inet addr:10.0.3.15 Bcast:10.0.3.255 Mask:255.255.255.0
          inet6 addr: fe80::a00:27ff:fe5c:4fda/64 Scope:Link
          UP BROADCAST RUNNING MULTICAST  MTU:1500  Metric:1
          RX packets:36 errors:0 dropped:0 overruns:0 frame:0
          TX packets:65 errors:0 dropped:0 overruns:0 carrier:0
          collisions:0 txqueuelen:1000
          RX bytes:5196 (5.1 KB)  TX bytes:8302 (8.3 KB)

lo        Link encap:Local Loopback
          inet addr:127.0.0.1 Mask:255.0.0.0
          inet6 addr: ::1/128 Scope:Host
          UP LOOPBACK RUNNING  MTU:16436  Metric:1
          RX packets:12 errors:0 dropped:0 overruns:0 frame:0
```

7. Start the web server, and try accessing this web server from the host OS. Using the IP address that we got, go to the URL of the application.

