

CS4340 Digital Special Effects Project Proposal

Title: My Snow Wish

Project team members

- Tan Weijian Colin (U087142Y)
- Koh Meng Hui (U080438H)
- Alicia Lee Jiayi (U086976Y)

The Effect

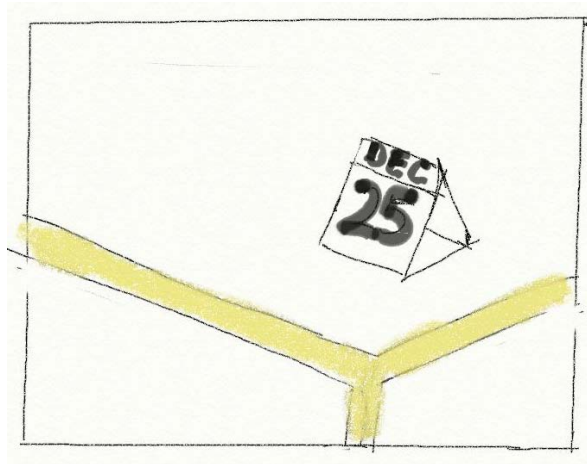
1-line description: Imagine snow in Singapore like a white Christmas!

Novelty: Snowing in Singapore is an effect that is never or rarely seen in any television shows or films. It is a near-impossibility for snow to be in Singapore except in Snow City or if the world ends.

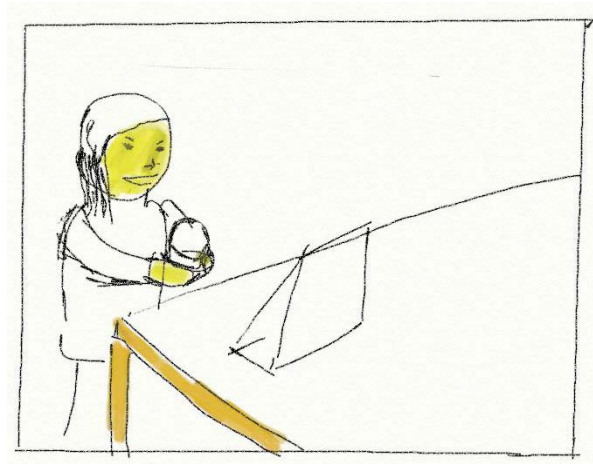
The Story

A girl holds a snow globe and wishes for snow. She shakes the snow globe and snow falls inside the snow globe. The girl smiles and looks out into the window and the horizon. Then magically, snow starts falling outside the window. Slowly and gradually, it begins to snow around the building which she is in. The girl runs outdoors into the park to enjoy the snow.

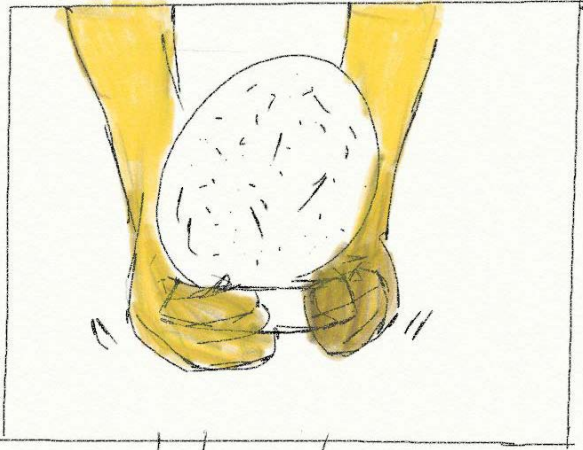
The Storyboard



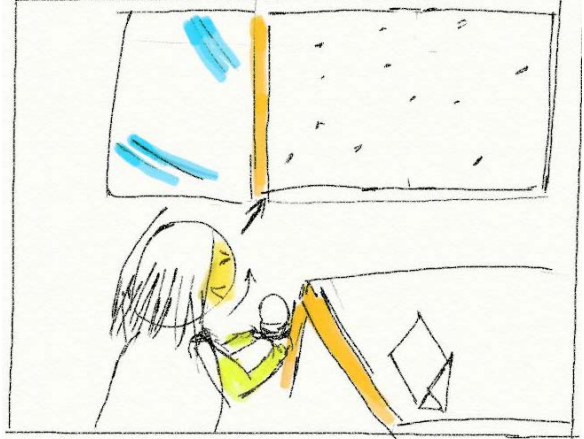
1. It's December 25: Christmas Day



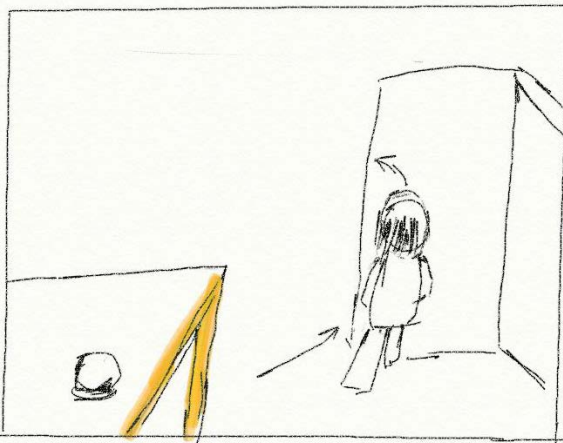
2. Girl takes her snow globe



3. She shakes the snow globe and says "I wish there was snow in Singapore!" Snow starts falling inside the snow globe.



4. She turns and looks out of the window. Camera follows her gaze and snow seems to start falling down from the sky.



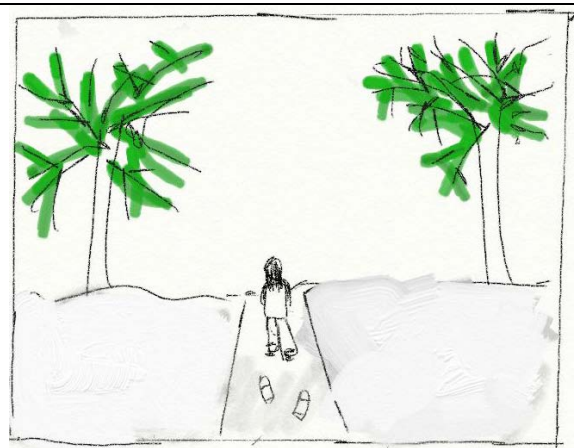
5. She runs out of her house in excitement



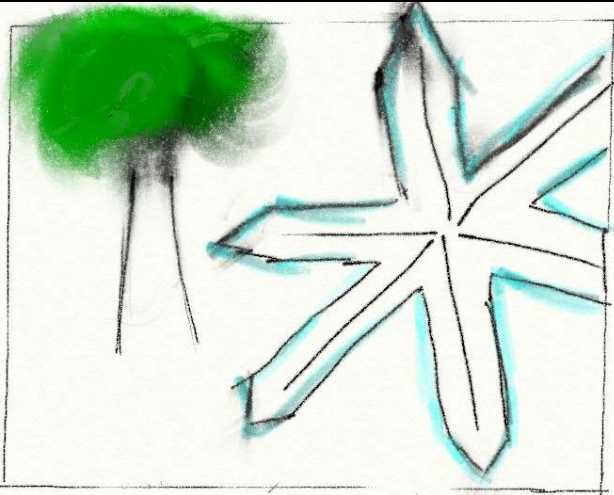
6. She runs into the park and it starts to snow heavily. She stretches out her hands and enjoys the falling snow in euphoria.



7. She looks around the park surroundings. Camera pans and focuses on a pavilion and the snow accumulating on it.



8. (Low angle) She walks away from the camera and leaves footprints in the piled snow.



9. A random focused giant snowflake flies in front of the camera and then flies away, with a blurred *bokeh* of the park in the background.

Production ideas

➤ **Describe the visual elements needed to achieve the effect.**

- Shots of exterior parks/pathways in cloudy day.
- Girl shaking snow globe (prop).
- Scene of girl enjoying the snow.
- Giant macro snowflake

➤ **Describe how to create the visual elements.**

Maya modelling and particles are used to create falling snow and snowflake(s).
Modelling of some of the buildings (e.g. pavilion) is done to achieve accumulation of snow.
Modelling of the footprints in the snow.

➤ **Describe how to put the visual elements together to achieve the effect.**

Composite matchmoving of the snow falling effect against the real shots of the park and pavilion. Composite of snow and girl touching snow and footprints.

Possibility of using Infrared lens to capture black and white effect on grass/trees which can be composited into the final video.

Tweak video to look more cloudy/white/foggy.

Composite matchmoving of footprints in the snow and the girl walking away.

Roles of team members

| Role | Colin | Meng Hui | Alicia |
|--|-------|----------|--------|
| Filming | | | |
| Director / Producer | | | |
| Acting | | | |
| Sound | | | |
| CG: Falling particles snow effect, Snowflake | | | |
| CG: Modelling and texturing of buildings, footprints | | | |
| Post-production: Matchmoving/After Effects | | | |
| Post-production: Editing | | | |
| 'The Making Of' Video | | | |

8. Production plan/schedule

| | When | Who |
|---|------------------------------|----------|
| Pre-production: Exploring location | Week 6 (14 Feb – 20 Feb) | Everyone |
| Production: Filming | Recess Week (21-25 Feb) | Everyone |
| Post-production: Snow effect | Week 7, 8 (28 Feb – 11 Mar) | Meng Hui |
| Modelling of Buildings | Week 7, 8 (28 Feb – 11 Mar) | Colin |
| Matchmoving | Week 9, 10 (14 Mar – 25 Mar) | Alicia |
| Editing + "The Making Of" | Week 11 (28 Mar – 1 Apr) | Colin |
| Final Cut | Week 12 (4 – 8 Apr) | Everyone |