

Break-through

Project Progress Update 1

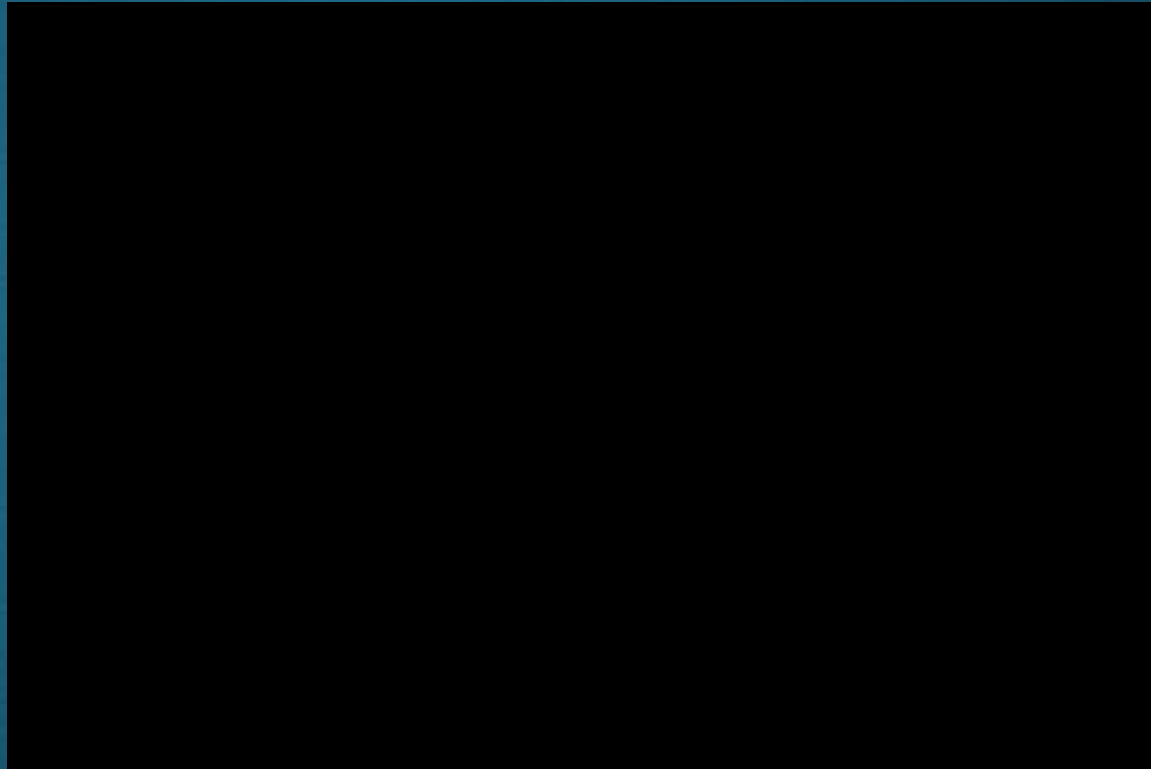
Luo Lan

Huang Jin Jerilyn

Cai Nannan

Liu Danqing

Sample cut of footages



Live footage and making-of video : All group members

Video editing: Luo Lan

Comments: This sample video shows the cut of the footages, excluding those sections with special effects. Additional editing will be done later.

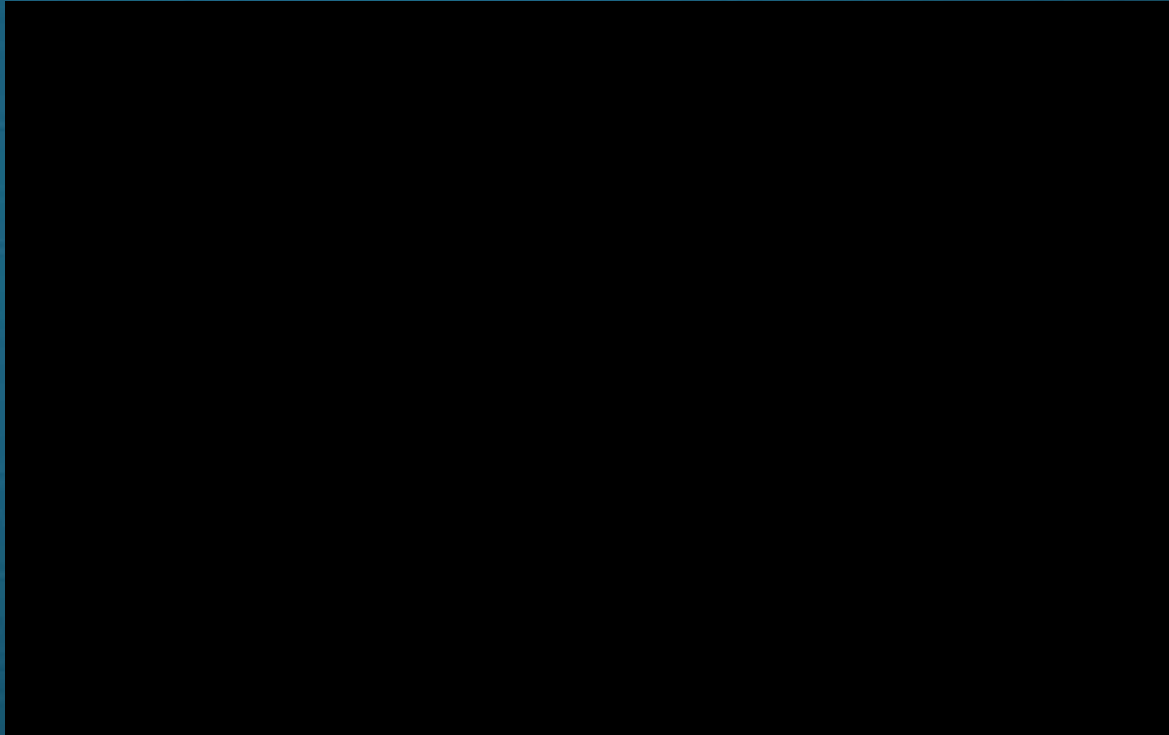
Green screen Sample



Colour keying: Danqing

Comments: More colour adjustment and speed will be adjusted to make the scene look more integrated.

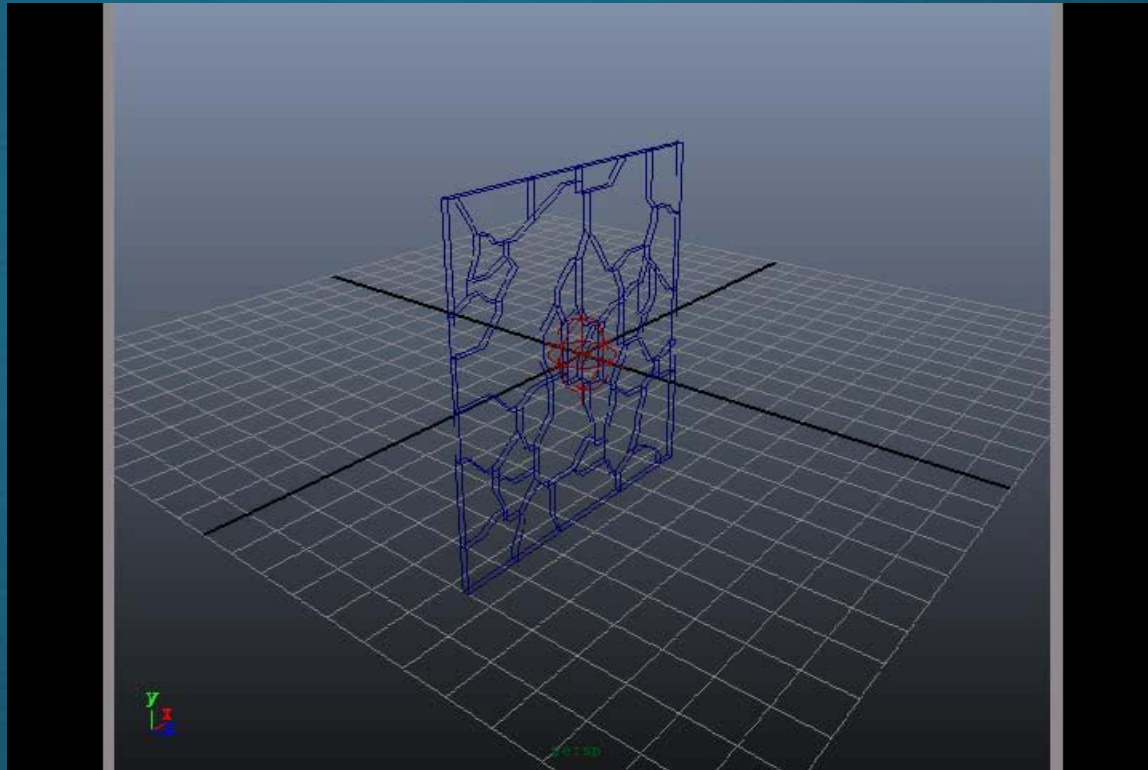
Sample effect



Effect of superman taking off: Jerilyn

Comments: Clip is incomplete. There is a second part of the smoke effect and energy effect after feet leaves off the ground.

3d glass blast



Glass blast in Maya: Nan Nan

Comments: Still in the process of integrating the maya glass into the actual footage

Remaining work – Luo Lan

1. “Glass pieces freeze” scene

For this scene, the most difficult part is to make the glass piece models reflect the environment image on themselves in each frame. We are planning to take a photo of the entire room which we were filming in first. Then create a large sphere and put all the objects of the scene in it. By mapping the photo onto the inner surface of that sphere, we can simulate the filming room in 3D environment. In addition, the video that taken should also be imported by using sequence image format, and generate the reflection together with the sphere.

2. Editing the film – colorising and sweetening

This will be done roughly first and polished again after the final effects are completed.

Remaining work – Dan Qing

1. Polishing colour keying – flying up building, hovering outside the window & flying through the window

We did not get a even solid green colour that we could key out easily due to uneven lighting. Also, the shots of superman require the actor to lie on the green screen. The green color reflected onto his clothes, making it difficult to do colour keying without affecting his clothes. Shadows were also cast on the green screen from certain angles. The darkness was difficult to key out. To overcome these issues, we had to spend time trying multiple different settings and also manually modify some of the frames in photoshop. Additional colouring and speed adjustments of the composited footage still need to be done to enhance the realism.

Remaining work – Jerilyn

1. **Superman taking off (2nd half)**

The main effect is already in place. However, more effects need to be done after the feet leaves the ground to make it more realistic and integrated.

2. **Flying blood from cut face**

The glass pieces created in the glass freeze scene will be integrated into this scene. A drop of blood will be flying towards the lens. I am still trying out the liquid simulation from Blender.

Remaining work – Nan nan

1. Glass blast

We need to integrate the glass model in Maya with the actual footage. The glass must also have the refraction of the surrounding and also match the movement of the scene to show the time freeze effect.

This portion is challenging because of insufficient experience with using Maya.

End