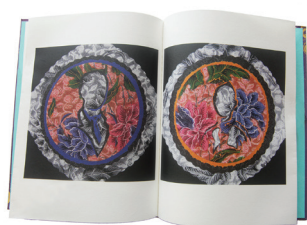


The Limited Fine Art Edition of EMILY OF EMERALD HILL

- 260 X 197 CM
- CASE BOUND IN SAIFU CLOTH WITH SILK SCREEN DESIGNS ON FRONT AND BACK COVERS
- FRENCH-FOLDED PAGES
- SAIFU-CLOTH-BOUND SLIP CASE
- ARTIST APPROVED PRESS PROOFS
- LIMITED TO 750 COPIES
- PRICE : S\$120 (including GST)



Stella Kon's iconic character, Emily of Emerald Hill, has been given life by many actors in numerous productions since the play was written in 1982.

Now, it is presented in a fresh way, with the script published as a fine art edition book limited to 750 copies with 20 artworks by Kelly Reedy.

Just as audiences have seen Emily's home at Emerald

Hill represented in stage sets lavish or minimalist, realistic or abstract, and Emily performed as larger-than-life, introspective or coy, *Emily of Emerald Hill* is discovered anew here via the medium of visual arts.

Commissioned to create symbolic images representing specially chosen characters and scenes from the play, Reedy worked exclusively in the medium of collage, combining elements from the different cultural heritages that make up the Peranakan world, including Malay inspired batik fabrics, Chinese traditional paper cuts, as well as references to the British Colonial era.

Reedy, who has lived in Southeast Asia for more than a decade, studied painting and drawing at the University of Wisconsin, and at L'Ecole Nationale Supérieure des Arts Décoratifs in Paris. Her artwork has been shown in Berlin, Paris, Chicago, and Singapore.



TO ORDER:

Mail this completed form with a cheque made payable to LANDMARK BOOKS PTE LTD to 106, Clementi St 12, #04-44, Singapore 120106.

Name:

Cheque number:

Number of copies:

Price + \$8 Singapore delivery =

Delivery Address:

Telephone number at delivery address:

Mobile telephone number:

CO-PUBLISHED BY

CONSTELLATION BOOKS

◊LANDMARK◊BOOKS◊